

Specifications

Type	Pumping Speed	Capacity at 5×10^{-6} Torr	Throughput at 20K
N ₂	1,700 Liters/sec.		
H ₂	2,500 Liters/sec.	10 std Liters	
H ₂ O	4,500 Liters/sec.		
Ar	1,400 Liters/sec.	1,100 std Liters	11 Torr Liters/sec. 870 scc/min.

Weight 41 lbs. (18.6 kg)	Crossover 155 Torr Liters	Cooldown Time 60 min to 20K w/CBST3.0 Compressor
Operating Orientation	Any	
Purge Tube	Integral	
Instrumentation	Silicon diode standard Hydrogen vapor bulb thermometer optional	

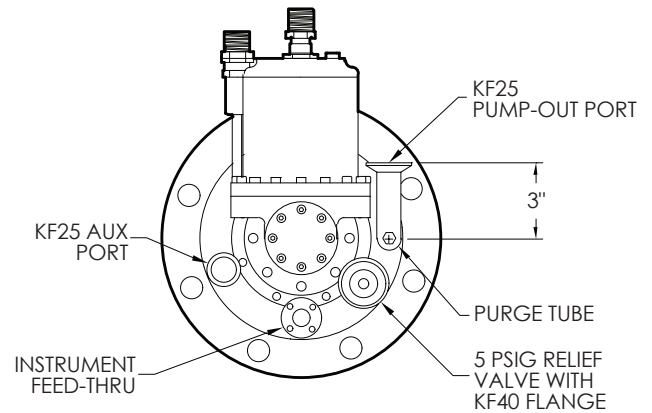
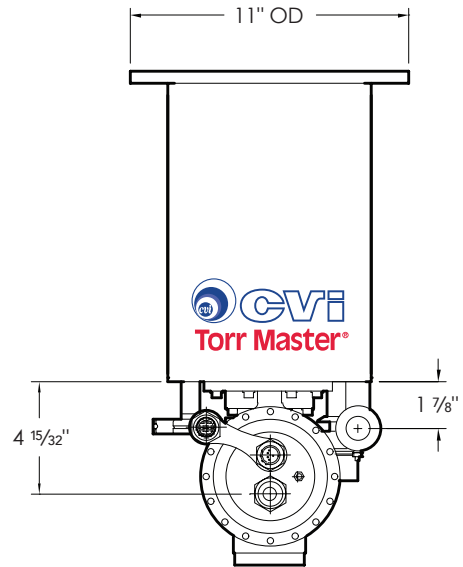
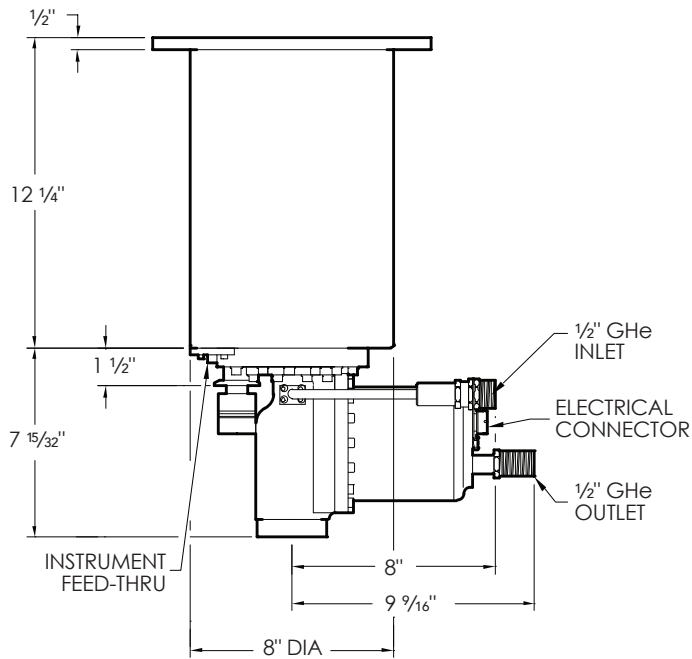
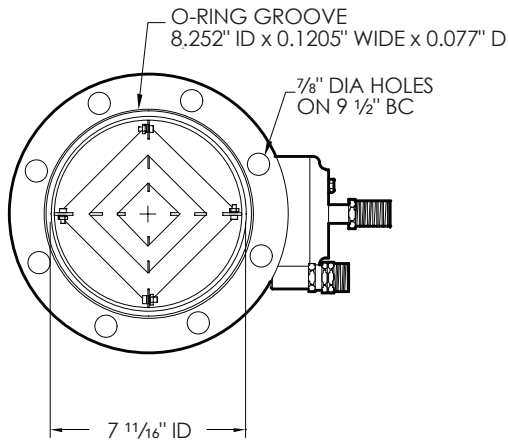
(Performance data based on 60-HZ operation)



Interfaces

System Flange	OD	ID	BC	Bolt Holes	O-Ring
ANSI	11"	7.68"	9.5"	8 ea 0.875" DIA	8.25" ID × 0.103" thick Viton (supplied)

Roughing Flange	ISO KF25
Accessory Flange	KF25
Purge Tube	½" Ultra-Seal fitting. Viton O-ring Includes blank and 0.33" bored tailpieces
Pressure Relief	5 psig poppet valve with ISO KF40 flange
Helium Connections	½" Aeroquip fittings
Electrical	Diode, 6-pin twist lock connector Refrigerator drive motor, 5-pin twist lock connector



8" TM150 (ANSI)